

# Setting Up Your E-mail in Microsoft Outlook Express

This tutorial shows you how to set up Microsoft Outlook Express to work with your e-mail account. This tutorial focuses on setting up Microsoft Outlook Express, but these settings are similar in other versions of Microsoft Outlook Express. You can set up previous versions of Microsoft Outlook Express by using the settings in this tutorial.

## Start Outlook Express

There are many ways to start Outlook Express, but here's a sure-fire way to find and start it.

1. Click the **Start** button.
2. Point to **All Programs**.
3. Click **Outlook Express**.

These first three steps are shown in the image below:



Opening Outlook Express from the Start menu

4. If asked whether you'd like to open this particular account automatically every time you start Outlook Express, click **Yes** (if you do) or **No** (if you don't).  
If you don't want to be asked this question again, click to check the **Always perform this check...** box.
5. Check **When Outlook Express starts, go directly to my Inbox**.  
Outlook Express directs all incoming mail to the Inbox, so it makes sense to bypass this opening page. If you don't see the list of folders and contacts on the left, click **Layout** on the **View** menu. Click **Contacts** and **Folder List** to check them, and then click **OK**.



Outlook Express list of folders



**Quick start.** You'll notice that when you use Outlook Express regularly, Windows XP will put the Outlook Express icon on the Start menu (along with other programs you've used recently). In that case, just click the **Outlook Express** icon in the **Start** menu to open the program.

## ***Set Up an Outlook Express E-Mail Account***

The Internet Connection Wizard makes short work of setting up your online mailbox by walking you through each step for every e-mail account you set up.

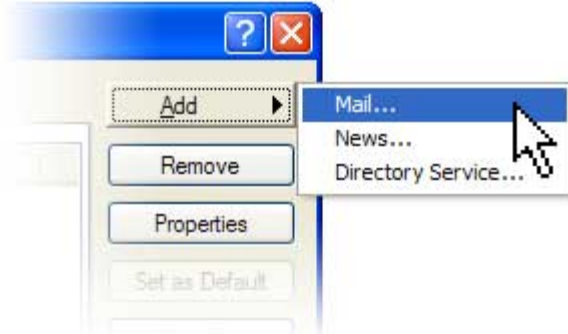
1. Before you get going, make sure you know your email address along with the following information. (You may need to contact your ISP, Internet Service Provider, to get it.)

### **First, information about the e-mail servers:**

- The type of e-mail server you use: POP3 (most e-mail accounts), HTTP (such as Hotmail), or IMAP
- The name of the incoming e-mail server
- For POP3 and IMAP servers, the name of the outgoing e-mail server (generally SMTP)

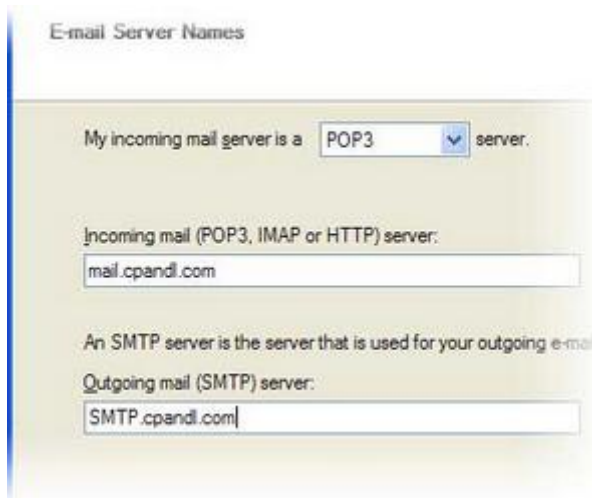
### **Second, information about your account:**

- Your account name and password  
(For some solid advice about making a secure password, read the [Create strong passwords](#) article.)
  - Find out if your ISP requires you to use Secure Password Authentication (SPA) to access your e-mail account—yes or no is all that's required.
2. Start Outlook Express, and on the **Tools** menu, click **Accounts**.  
If the Internet Connection Wizard starts up automatically, skip ahead to step 4.
  3. Click **Add**, and then click **Mail** to open the Internet Connection Wizard.



Mail option from the Add button

4. On the **Your Name** page of the wizard, type your name as you want it to appear to everyone who gets e-mail from you, and then click **Next**.  
Most people use their full name, but you can use any name—even a nickname—that people will recognize.
5. On the **Internet Explorer Address** page, type your e-mail address, and then click **Next**.
6. On the **E-mail Server Names** page, fill in the first block of information that you gathered from your ISP in step 1, and then click **Next**.



Internet Connection Wizard's E-mail Server Names

**Note:** If you chose HTTP as your incoming e-mail server—as for a Hotmail or MSN account—this wizard page changes slightly so you can identify your HTTP mail service provider.

7. On the **Internet Mail Logon** page, type your account name and password.



Internet Connection Wizard's Internet Mail Logon

**Note:** If you're concerned about break-ins to your e-mail, click to clear the check in the **Remember Password** box. You'll then be prompted for the password each time you send or retrieve mail.

8. Click **Next**, and then click **Finish**.

You're ready to send your first e-mail!



**Unsure if your new e-mail account is working?** Send an e-mail message to a friend. If they get the message, your account is ready to roll! But if you run into problems setting up your account, Outlook Express offers help. Search for troubleshooting topics from **Contents and Index** on the **Help** menu.

## **Web-based E-Mail Account**

The e-mail that you get in a Hotmail account and other Web-based accounts is not stored on your hard disk, but is kept on the account-provider's computer. That's what makes it possible to access your account from any computer in the world over the Internet. Here's how use web-based email.

1. Go to your web site address followed by "/webmail". (i.e. [www.globalnetdesigns.com/webmail](http://www.globalnetdesigns.com/webmail))



**If you share your computer with someone else**, take advantage of Fast User Switching. A feature of Windows XP, it lives up to its name by enabling you to switch among users on a single computer without closing any programs you are running or logging off.

- To turn Fast User Switching on, open **User Accounts** in Control Panel. Click **Change the way users log on or off**. Make sure the **Use Fast User Switching** box is checked.
- Then, to switch users, click **Start**, click **Log off** and then click **Switch User**. On the Welcome screen, click the user account you want to switch to. That's it!